

# Your brand is important.

Your students, staff and parents all identify with it.

In our experience, building a unique platform that reflects the identity of your school, and involving your team in the design process creates significant ownership and greatly aids implementation and engagement



The **Frog Design Studio** will work with you directly to create **three bespoke themes**.

An example of this package, created for Aldinga Payintha College can be seen to the right.

All three themes will incorporate your school's preferred styling, with each of the three theme variations incorporating a different navigation menu type.

Each bespoke theme can be used on as many sites and dashboards as you require.

### What is customisable?

To answer this, we are going to break a theme down into four different aspects...

#### Bespoke background

The background is where the theme gains its greatest visual impact - you can use either your school's branding or a bespoke style of your choice.

#### Navigation menu

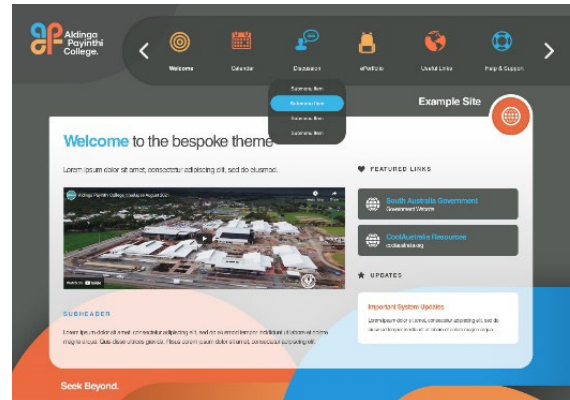
We create a CSS-powered menu that is editable on a site-by-site basis. We also have the ability to add icons to menu items that can be easily customised.

#### Content area

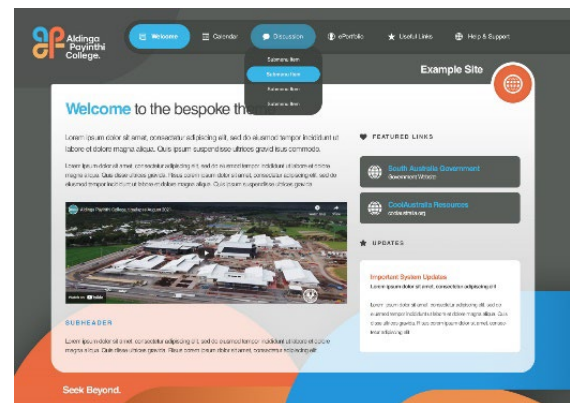
The area that is used for adding page content can be styled and have different behaviour applied - it can expand with the screen or be set to a fixed width.

#### Widget Content

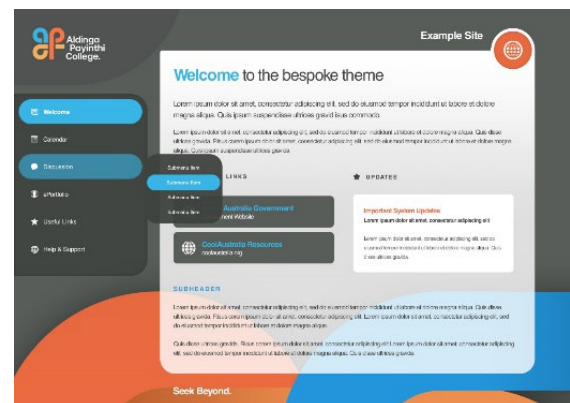
The content of certain widgets (such as the Content widget) will pick up text and font styling that is contained in the theme - to ensure it is in keeping with the overall



**Theme 1 – Icon Menu**



**Theme 2 – Top Menu**



**Theme 3 – Side Menu**

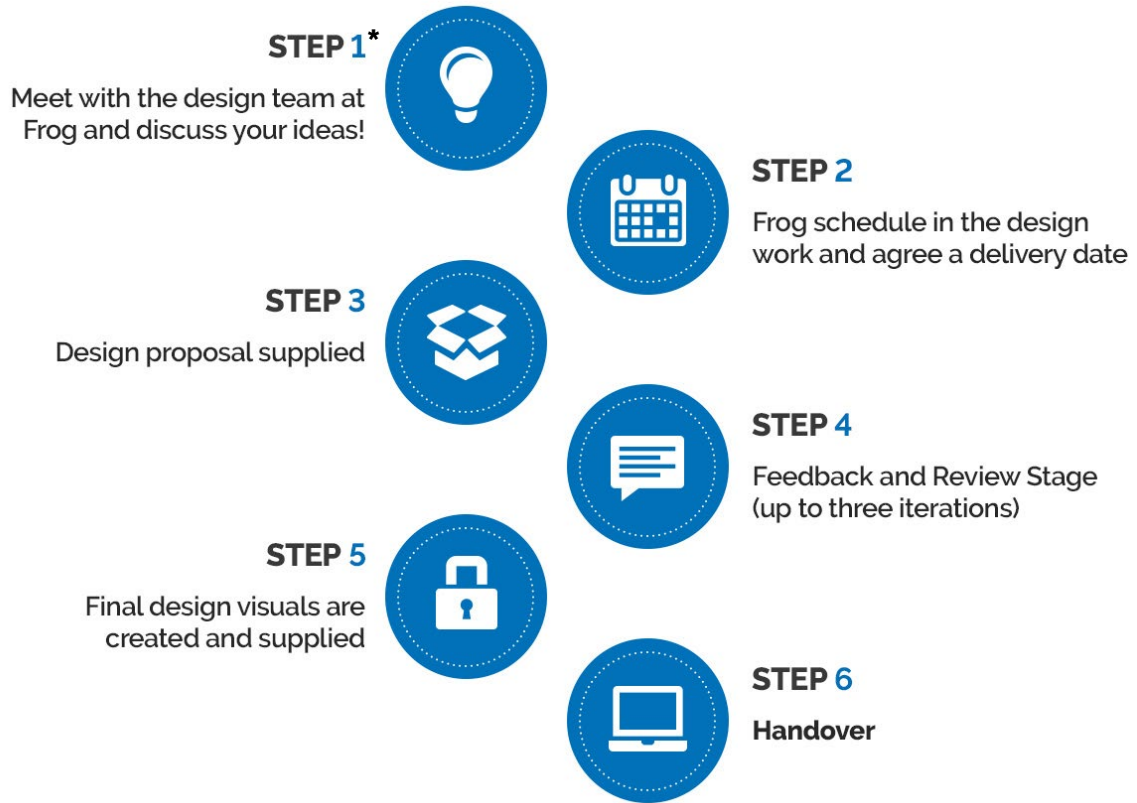
### Why choose Gold?

With three bespoke themes, schools can select a theme that is not only matched to their brand but also best suited to the content or information being presented. For example, icon menu themes are great for welcome dashboards.

## THE DESIGN PROCESS

---

The design process is a collaboration between the school and a designer from Frog. The standard process that we follow is outlined below...



\*This step is only applicable to Gold and Silver packages. For Bronze package(s) the school will provide their logo and colour scheme so that Frog can create a customised design.



**frog**

[www.frogeducation.com.sa](http://www.frogeducation.com.sa)

[hello@frogeducation.com](mailto:hello@frogeducation.com)

+44 (0) 1422 250800